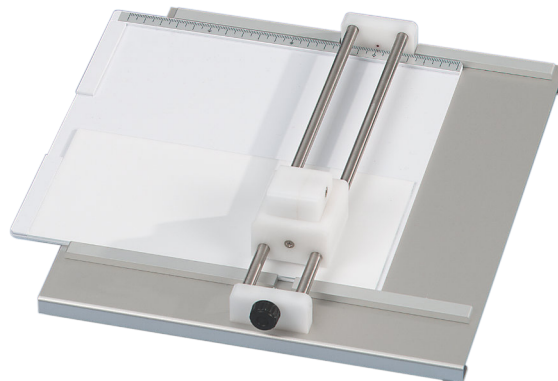


- High-quality carbide scriber**
- Available for glass TLC/HPTLC plates up to 200x200mm**
- Graduated ruler for precision cutting**
- Very easy replacement of the carbide scriber**
- Avoids to buy costly pre-cut plates**
- Cost-saving by using only the TLC plate size**



The scoring and cutting of glass TLC/HPTLC plates is a routine in many chromatography laboratories either to economise on plate usage or to cut the plate following separation for further derivatization.

The plate cutter consists of a high-quality carbide tip mounted in a movable carbide tip, mounted in a movable plastic holder.

The plate is placed on the aluminium plate.

A graduated ruler allows precise cutting to the desired dimensions.

It is designed for cutting TLC / HPTLC glass plates up to 200 x 200 mm.

The carbide tip can be replaced very easily.

Insert the glass plate into the holder with the absorbent side down.

Place the cutting head in the starting position and slide the assembly along the glass plate.

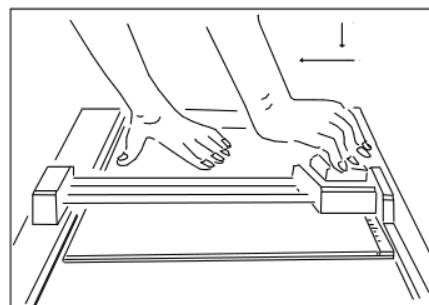
Remove the plate and separate the two parts manually.

TECHNICAL SPECIFICATIONS

Material: Aluminium tray - Carbide tip mounted on PP support.

Dimensions : 220 x 250 x 50mm

Weight : 0,650 Kg



Replacement carbide scriber BS178.501