

TLC/HPTLC
Equipements and supplies

 **biostep**[®]
a brand by bionis



 **bionis**

1997

ESTABLISHMENT OF THE COMPANY BIONIS

2020

NEW MANAGEMENT TEAM

March 2023

BIONIS ACQUIRES BIOSTEP GmbH



Special Kit for students



Includes:
Concise practical book of TLC
H-separating chamber
Micro-capillaries
Application template 50x50mm
HPTLC plates 50x50mm

QUICK TEST TLC KITS

3-Dyestuff test solution, lipophilic, 10 ml

4-Dyestuff test solution, hydrophilic, 10 ml



DYESTUFF TEST SOLUTION

2 models, for 50x50 or 100x100 mm plates

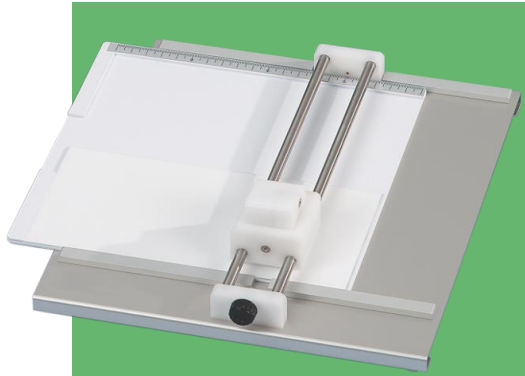
PTFE tank with 4mm thick glass lid

Frit rods Pack of 5 pieces



H-SEPARATING CHAMBERS

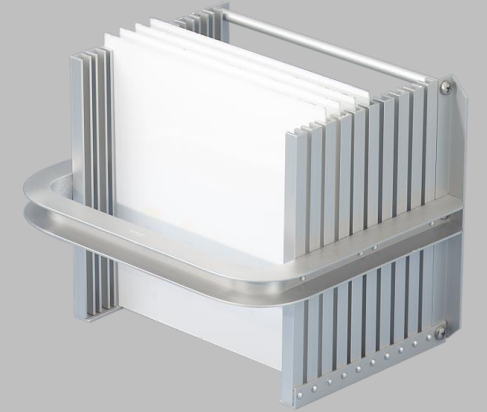
PREPARATION



For cutting TLC plates up to
200 x 200mm
High quality carbide tip

PLATE-CUTTER

For 10 plates of 200 x
200mm, 200 x 100mm and
200 x 50mm



DRYING RACK



DESSICATOR OPENER

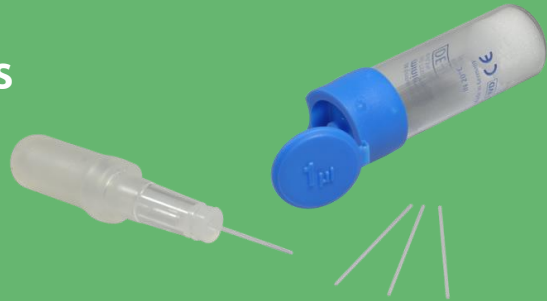
Thickness adjustment
from 100 to 2000µm
For 5 sheets 200 x 200mm or 10
sheets 200 x 100mm




SPRAYING TABLE

APPLICATION

Volumes of 0,5 μ l, 1 μ l,
2 μ l, 5 μ l, 10 μ l
Packs of 100 pieces



MICRO-CAPILLARIES

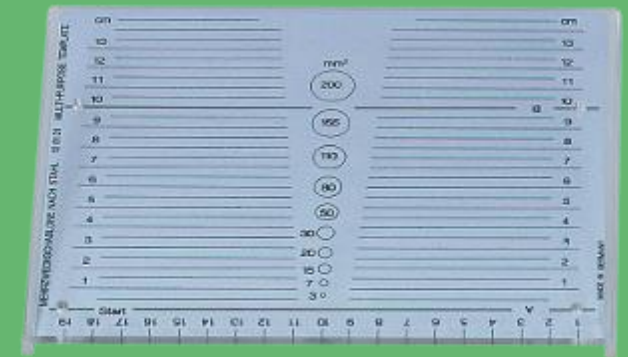
Four application templates are shown: a 200x200 mm plate, a 200x100 mm plate, a 100x100 mm plate, and a 50x50 mm plate. Each plate has a ruler along one edge and a grid of triangular cut-outs. The 200x200 mm plate shows a grid of colored spots.

- Plate marker:
- 200 x 200 mm
 - 200 x 100 mm
 - 100 x 100 mm
 - 50 x 50 mm

Triangular cut-outs every 5 mm

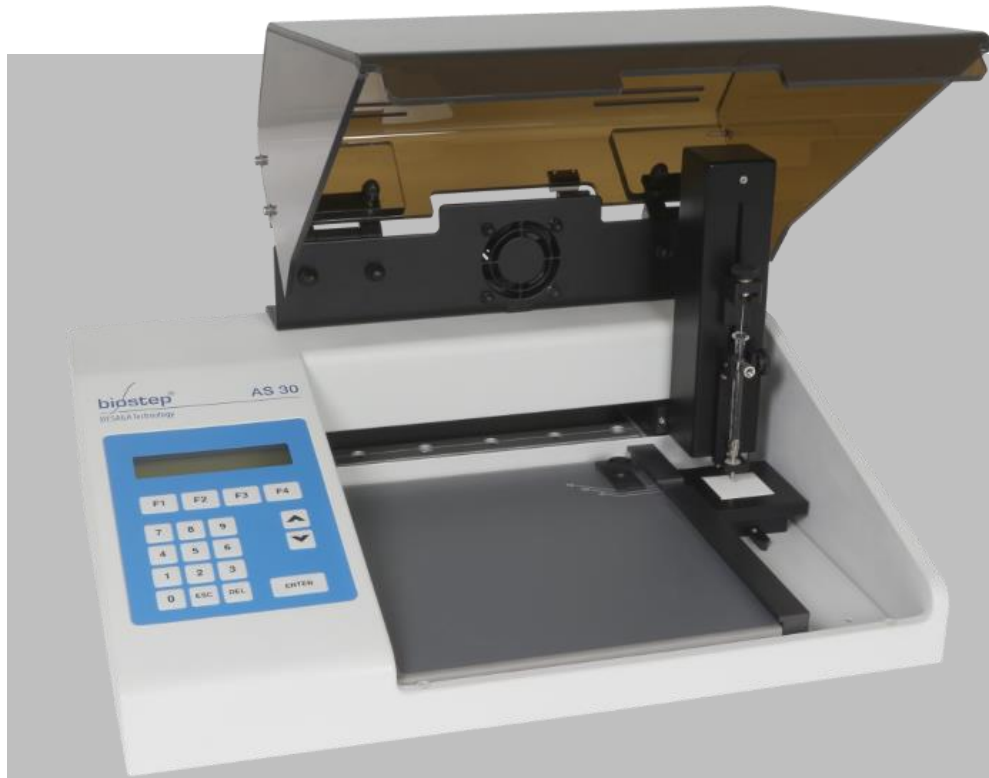
APPLICATION TEMPLATE

19 marks with 10 mm spacing
Indication of RF values
Circular marks from 3 to 200 mm² for
point size comparison



APPLICATION & EVALUATION TEMPLATE

SEMI-AUTOMATED APPLICATOR



Rinsing on cotton filter after each deposit



For plates up to 200x200mm



Nebulisation deposit with a spotting volume from 0.1µl to 1 ml



Coupling with BS35 for full-automatic operation



Can be operated with CD60 densitometer

SPOTTER AS30

Dimensions:
500 x 380 x 180 mm

SEMI-AUTOMATED APPLICATOR



Spot or line application of up to 30 samples



Resolution: 2000 step/ μ l



Application rate: 3 to 120 μ l/s



Up to 10 pre-recorded methodes

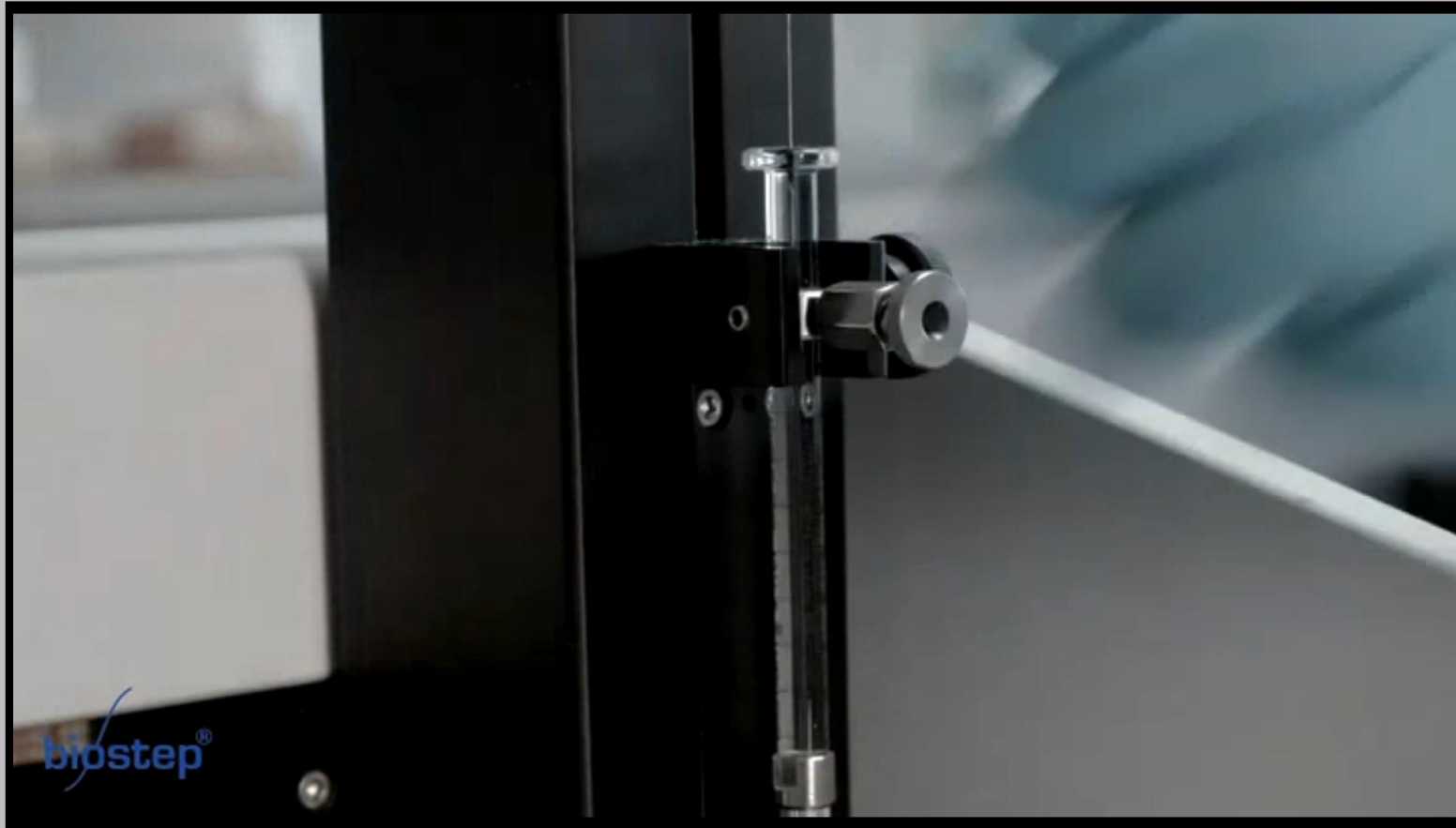


Stand-alone operation possible

SPOTTER AS30

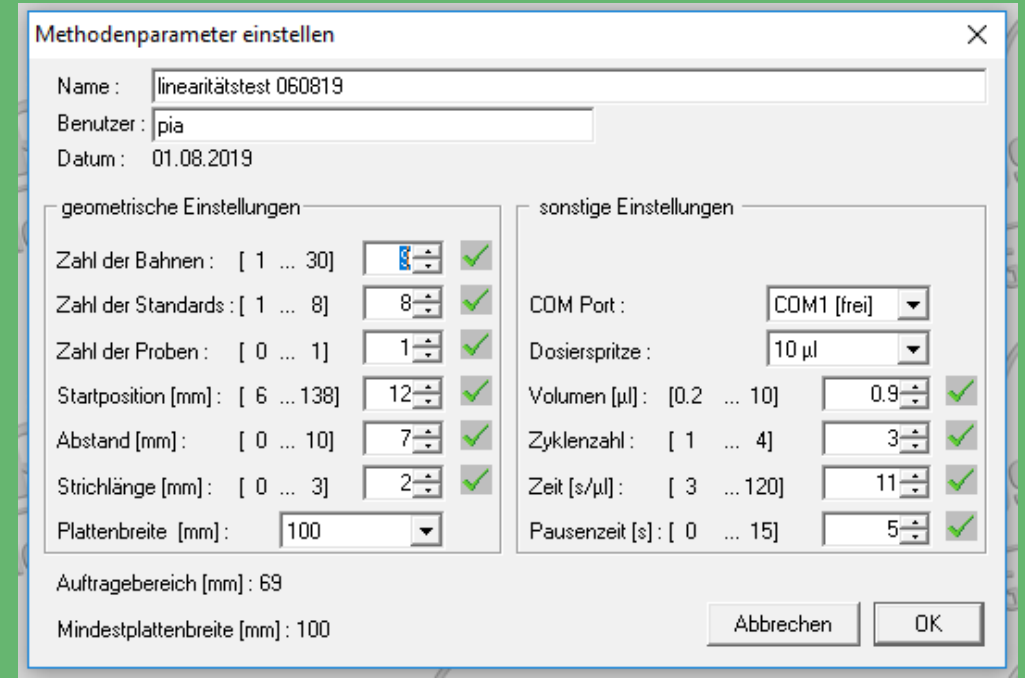
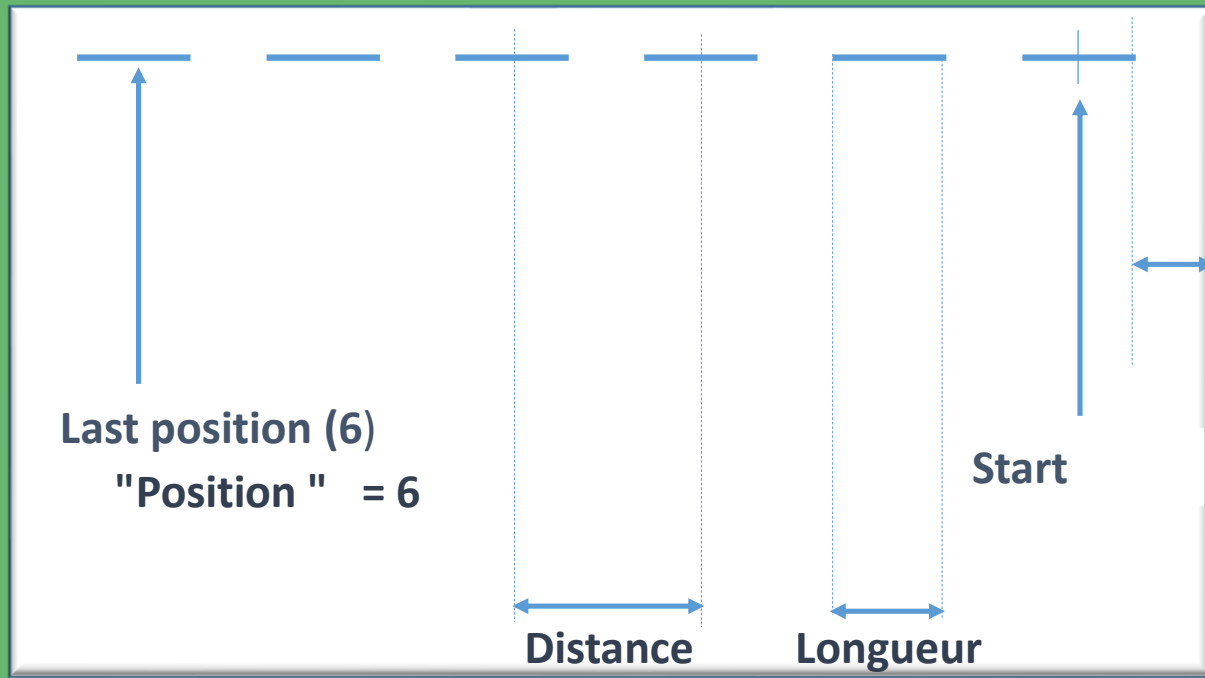
Dimensions:
500 x 380 x 180 mm

SEMI-AUTOMATED APPLICATOR



SPOTTER AS30

SEMI-AUTOMATED APPLICATOR



Methodenparameter einstellen

Name : linearitätstest 060819

Benutzer : pia

Datum : 01.08.2019

geometrische Einstellungen

- Zahl der Bahnen : [1 ... 30] 8 ✓
- Zahl der Standards : [1 ... 8] 8 ✓
- Zahl der Proben : [0 ... 1] 1 ✓
- Startposition [mm] : [6 ... 138] 12 ✓
- Abstand [mm] : [0 ... 10] 7 ✓
- Strichlänge [mm] : [0 ... 3] 2 ✓
- Plattenbreite [mm] : 100

sonstige Einstellungen

- CDM Port : CDM1 [frei]
- Dosierspritze : 10 µl
- Volumen [µl] : [0.2 ... 10] 0.9 ✓
- Zykluszahl : [1 ... 4] 3 ✓
- Zeit [s/µl] : [3 ... 120] 11 ✓
- Pausenzeit [s] : [0 ... 15] 5 ✓

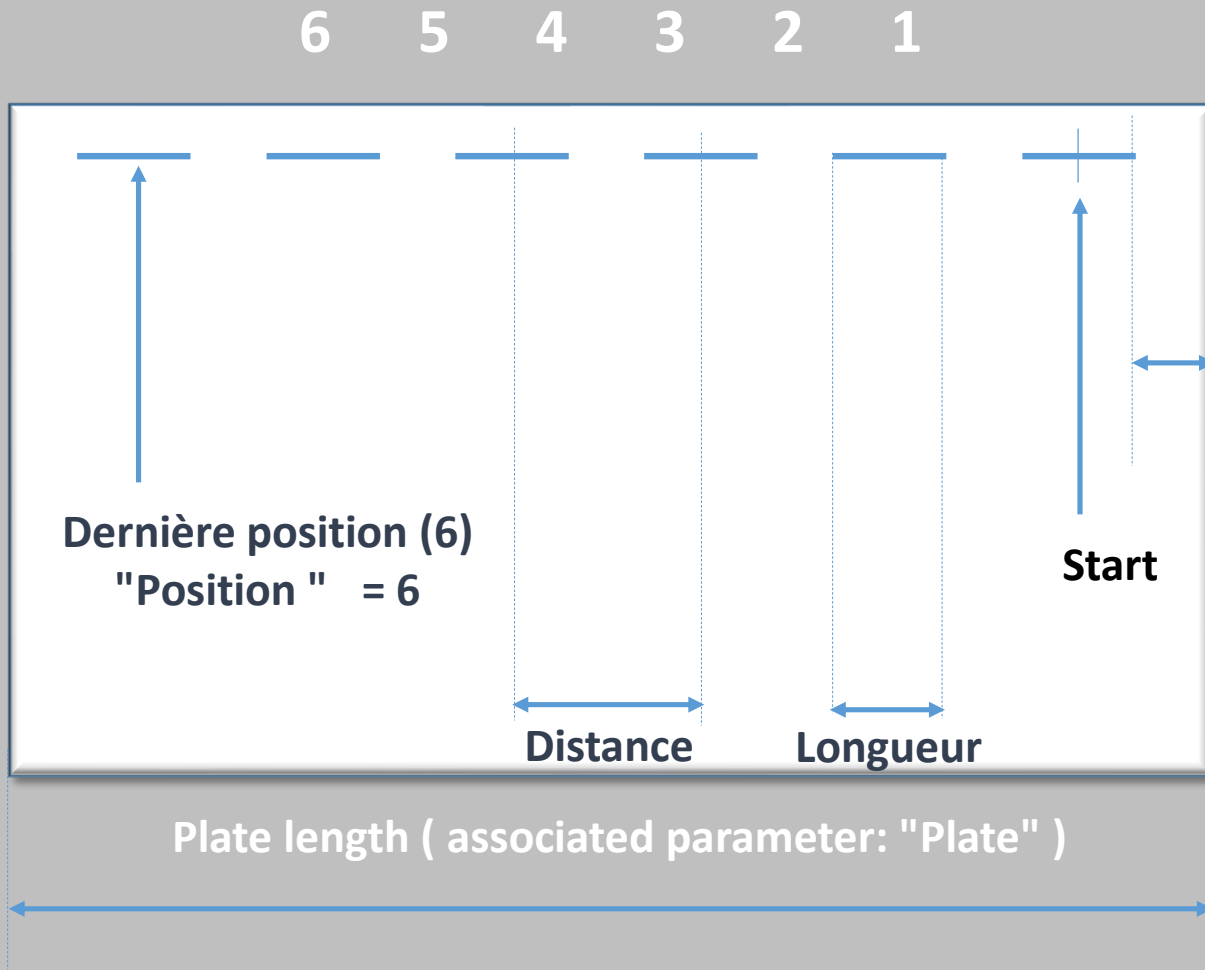
Auftragsbereich [mm] : 69

Mindestplattenbreite [mm] : 100

Abbrechen OK

Plate length (associated parameter: "Plate")

SEMI-AUTOMATED APPLICATOR



Einstellung der Bahnbelegung

Name : linearitätstest 060819
Benutzer : pia
Datum : 01.08.2019

gewählte Probe oder Standard

Proben :

Standards :

Bahnbelegung

Bahn : 1 2 3 4 5 6 7 8 9 10 11 12 13 14 15 16 17 18 19 20 21 22 23 24 25 26 27 28 29 30

Probe/
Standard :

Abbruch OK

SPOTTER AS30

FULL-AUTOMATED APPLICATOR



Accuracy and repeatability of sample deposits



Rack for up to 80 bottles



Programmable sample order and volume



Acrylic rack mount for reduced volume

FULL-AUTOMATED APPLICATOR





Models with or without median grooves
Glass, SS or knobbed lids
For 200x200mm plates

STANDARD CHAMBERS

Glass, SS or knobbed lids
For 200x100 mm or 100x100 mm plates



NANO CHAMBERS



Up to 5 plates
200x200 mm
Glass, SS or knobbed lids
Aluminium rack

SIMULTAN CHAMBERS

Glass, SS or knobbed lids
2 models, for 50x50, 100x100 mm and 200x200mm plates



TWIN THROUGH CHAMBERS

REVELATION



Atomizer test tube 12ml
Rubber bulb sprayer 100ml



GLASS SPRAYER



Replaceable gas tank
113 ml
125 ml flask

PRESSURE SPRAYER

Transfer on Derivamouss
foam pad

For up to 200x200 mm
plates

Derivamouss: Pack of 100 pieces
Sticker for identification of the reagent



DERIVAPRESS



For 100x100, 200x100 or
200x200 mm plates

PP support for 2 tanks

Opening width 5mm

DIPPING CHAMBERS

REVELATION

High performance pump 230V

Drops from 5 to 10 μ m

Borosilicate glass tank 50ml

Dark glass tank available



ELECTRICAL SPRAYER

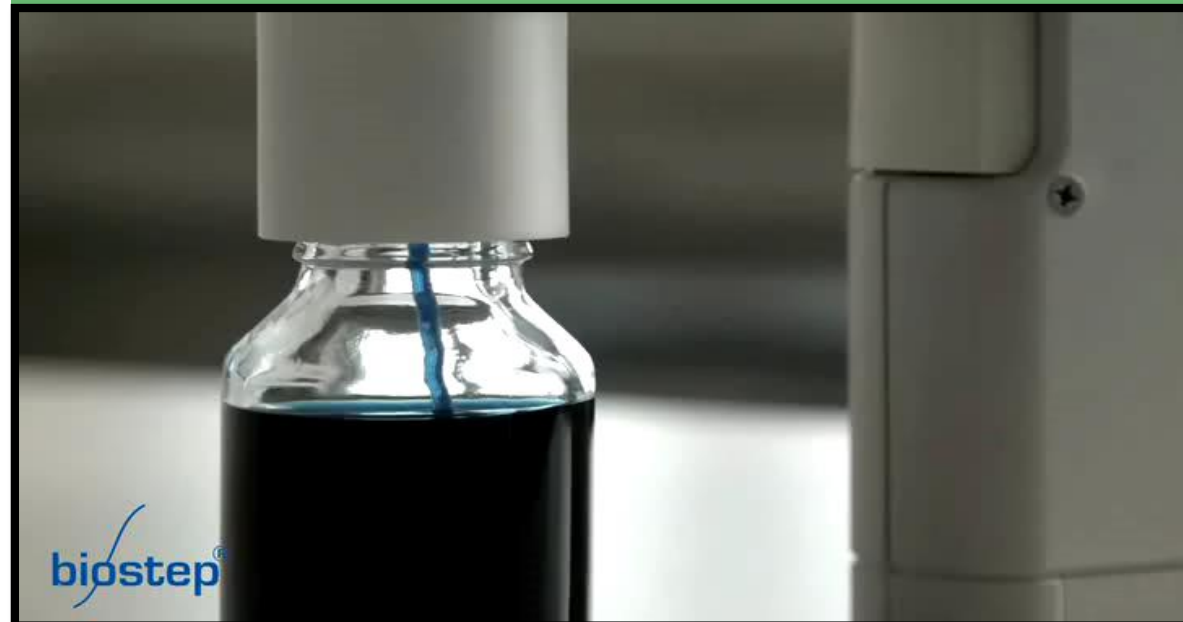


For plates up to 200x200 mm

Air suction 400 m³/h

Evacuation by tubing NW 110

SPRAY BOX WITH VENTILATOR



- Temperature range 25-200°C
- Heating surface 240x240 mm
- Change from green to red in case of temperature increase
- Acoustic signal for timer
- Save up to 9 programs



HOT PLATE THERMOPLATE S+

DERIVATIZATION



Precise determination of up to 30 spray zones



Integrated fan secures against aerosol formation



Adjustment of the injection parameters according to the viscosity of the reagent



Possibility of repeating the spraying procedure up to 5 times



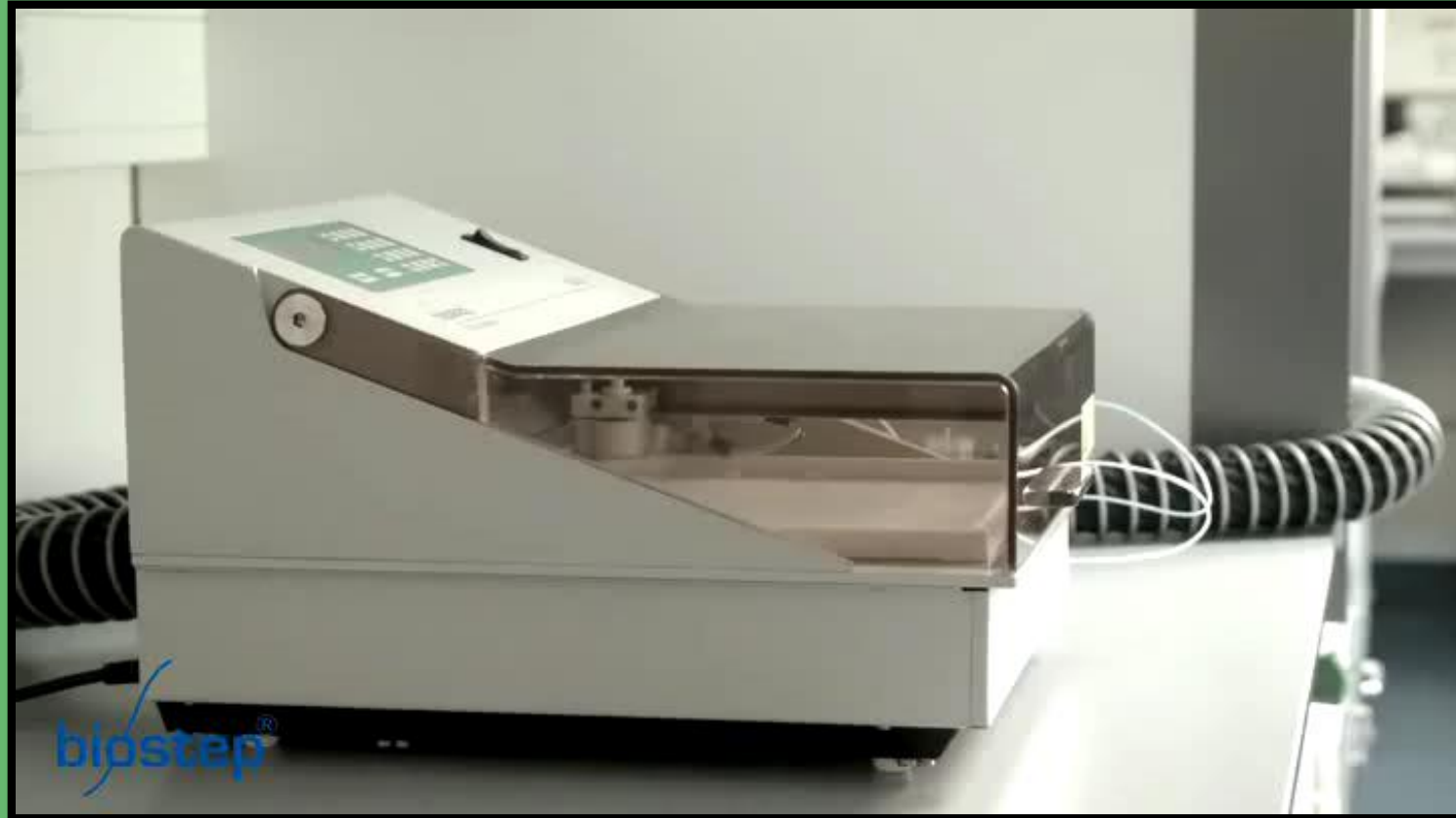
4 methods stored in the device



4 solvent tanks

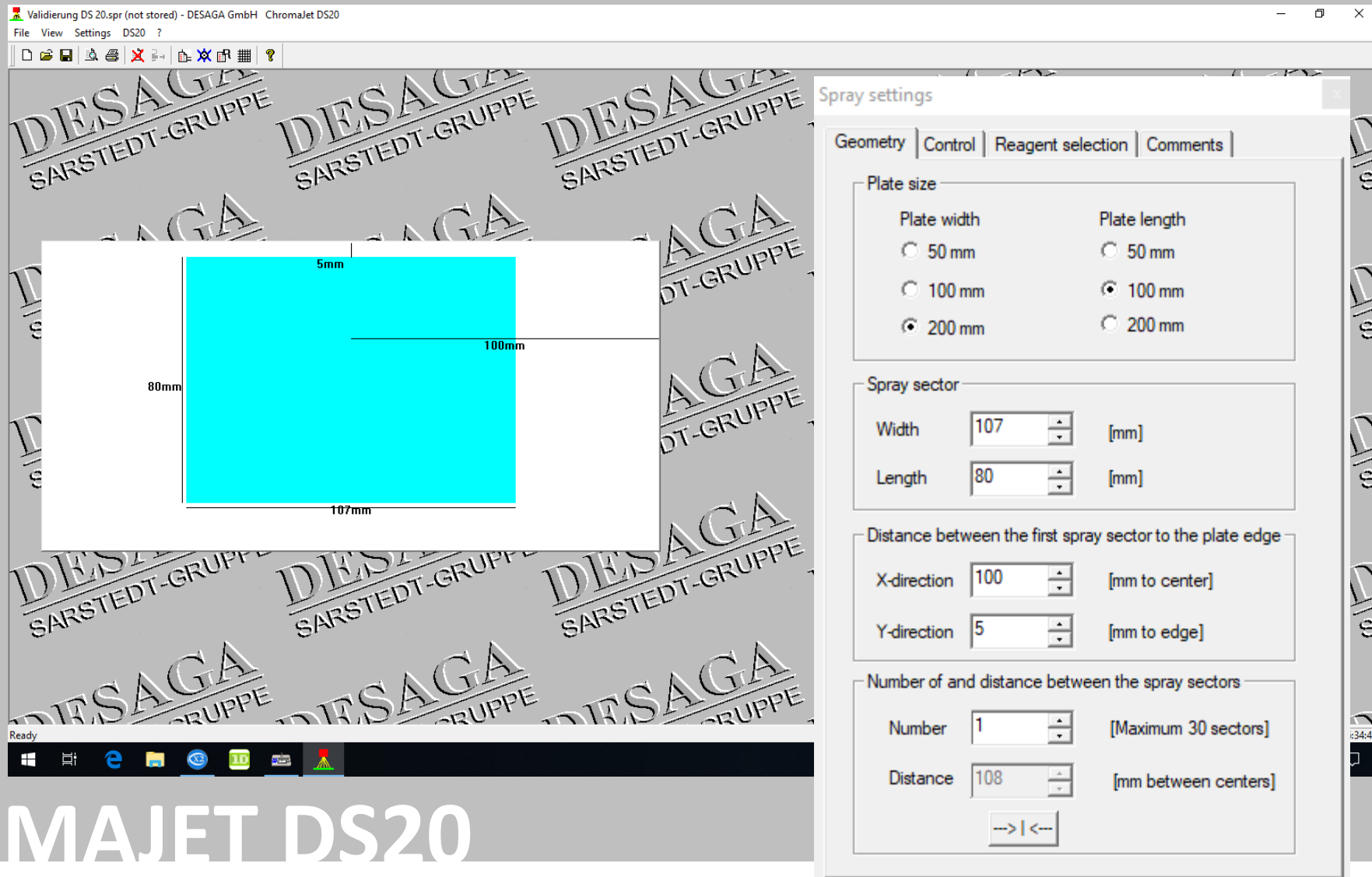
CHROMAJET DS20

DERIVATIZATION



CHROMAJET DS20

DERIVATIZATION



The screenshot displays the ChromaJet DS20 software interface. The main window shows a plate layout with dimensions: 80mm height, 107mm width, and a 5mm margin. A settings dialog box is open, showing the following configuration:

Section	Parameter	Value	Unit / Note
Plate size	Plate width	200 mm	
	Plate length	100 mm	
Spray sector	Width	107	[mm]
	Length	80	[mm]
Distance between the first spray sector to the plate edge	X-direction	100	[mm to center]
	Y-direction	5	[mm to edge]
Number of and distance between the spray sectors	Number	1	[Maximum 30 sectors]
	Distance	108	[mm between centers]

CHROMAJET DS20



Manual operation or on feet

2 tubes UV254 nm 6W, and
366 nm 6W

UV LAMP

UV254 nm (Tube), 310 nm (LED),
345 nm (LED), 366 nm (LED)

Work on plates thanks to the preparative
TLC mode with opening of the filter screen
at 45 °

UV cut-off at door
opening

SCHOTT selective
filter for retention
of non-fluorescent
compounds

NEW !



HP-Uvis 2.0

For ccm plates up to 200x200 mm

2 UV254 nm tubes, 4 UV 310 nm LEDs, 2 UV 345 nm LEDs, 2 UV 366 nm LEDs 4 visible LEDs and 1 visible LED for transmission reading

Auto-zoom lens, auto-focus

18 MPixel capture head

Ergonomic software (CRF21 part 11 version in option)

Dimensions:
395 x 390 x 290 mm

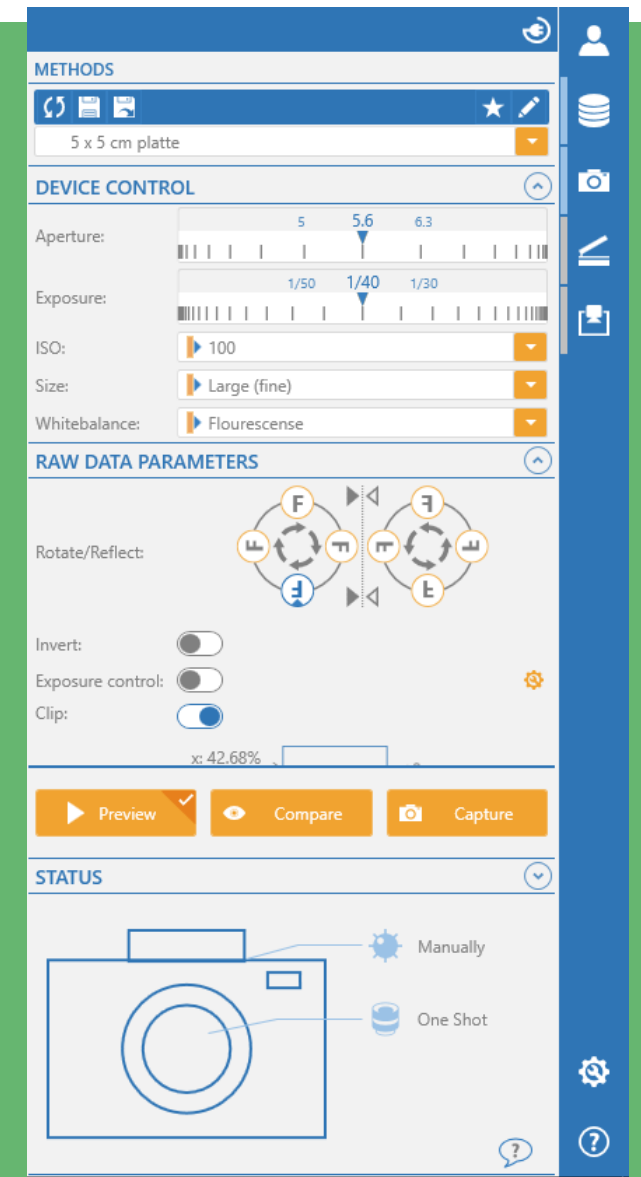
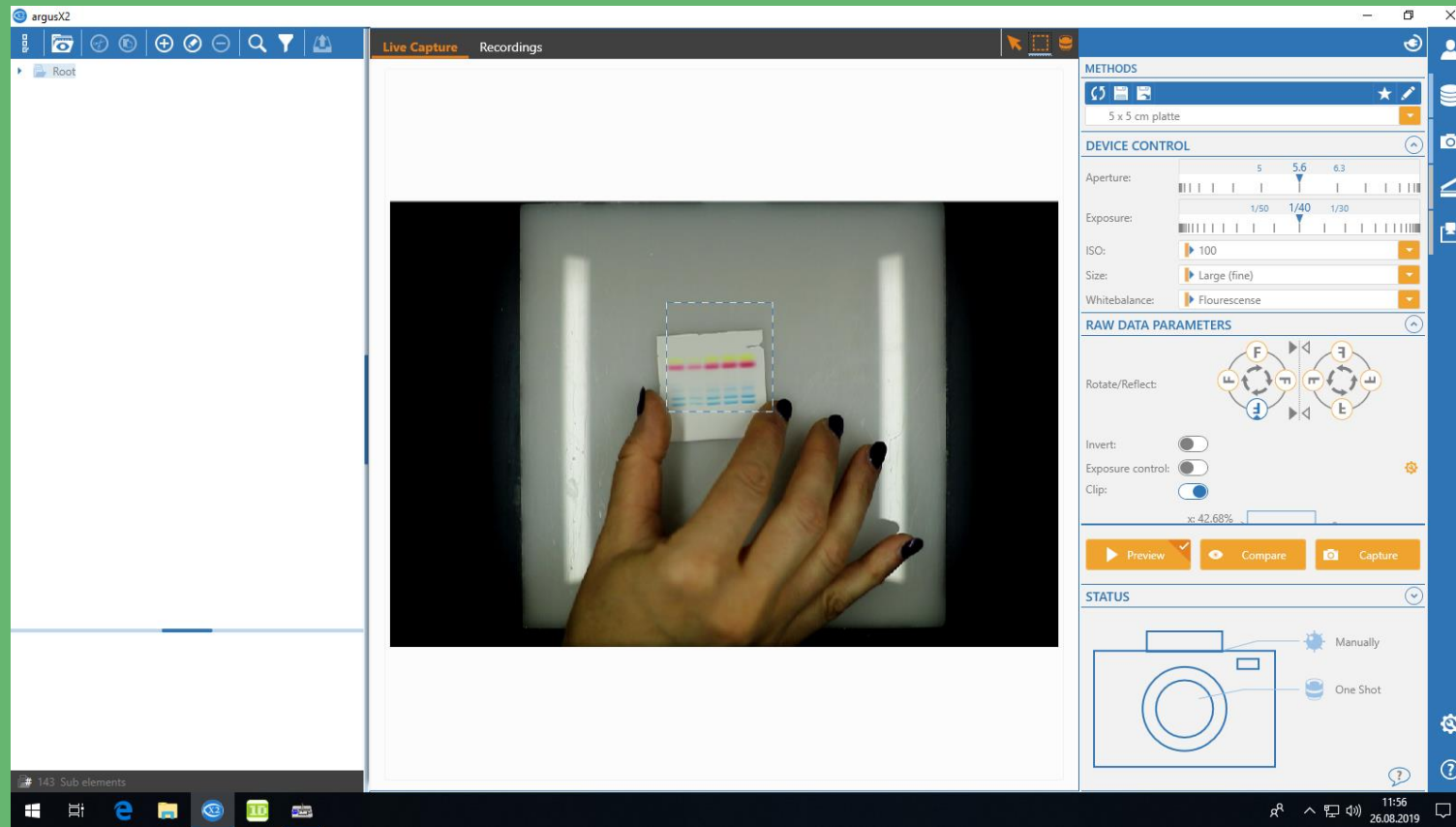


NEW !

DOCUMENTATION SYSTEM

PROVIDOC DD80

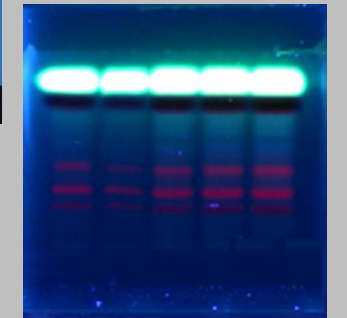
DOCUMENTATION



DOCUMENTATION



The screenshot displays the argusX2 software interface. On the left is a file tree with folders like 'Bionis Arbiol', 'dev', and 'kammersätttest'. The main window shows a chromatogram with a y-axis from 0 to 1. A yellow oval highlights a peak at approximately 0.783, labeled 'Fluorescein'. A red rectangle highlights another peak. The software interface includes a 'GENERAL' panel with 'Annotations' and 'Rf scale' options, a 'NEW ANNOTATION' section, and an 'ANNOTATIONS' list. The bottom status bar shows coordinates and 'RF' values.



QUANTIFICATION



UV, visible and fluorescence measurements, in transmission and remission



Ergonomic software



Sample qualification and quantification



3 light sources: Deuterium, Halogen, Mercury Vapor



Wavelengths between 190 and 900 nm



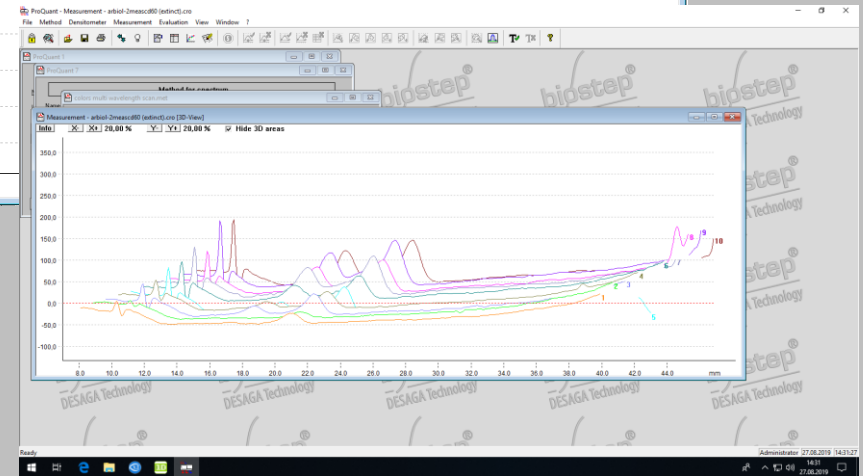
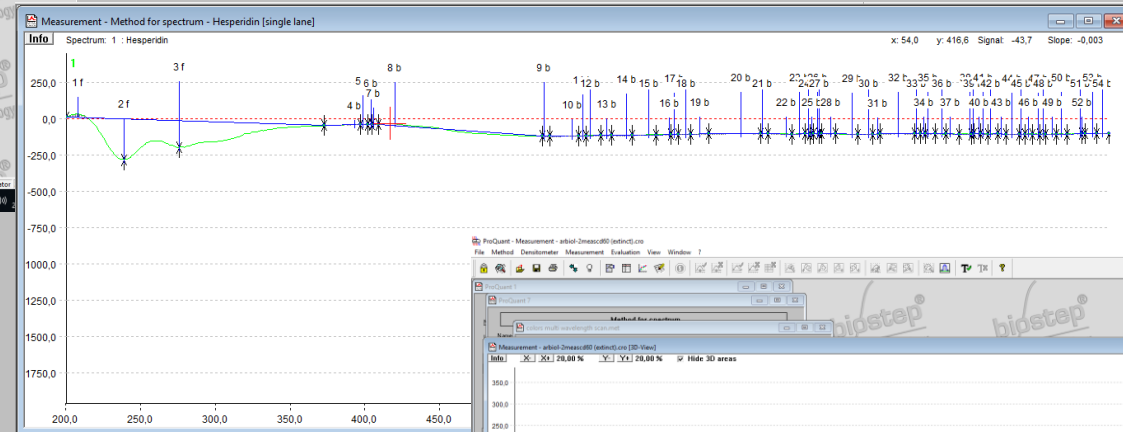
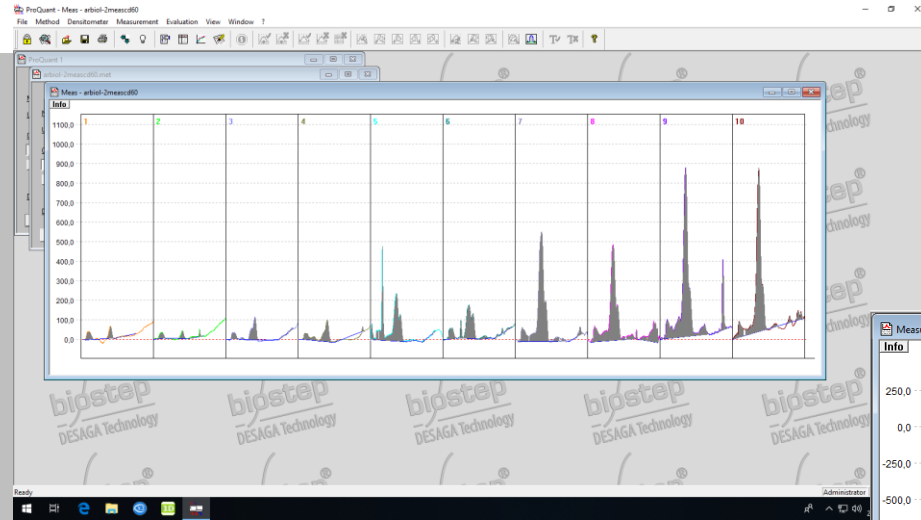
Automatic noise correction

DENSITOMETER CD60

QUANTIFICATION



3 measurement modes: Spectrum,
Chromatograms, Multi-wavelength scan



Dimensions:
730x550x300mm



QUANTIFICATION

